

Smart Home Systems

# User Manual



# MyLights User Manual

---

## Contents

1 - INTRODUCTION	3
2 - CONTROLS	4
3 - HOME PAGE	5
4 - GROUP PAGE	6
5 - SCENES PAGE	7
6 - SCENES EDITOR PAGE	8
7 - SETUP PAGE	9
8 - LIGHTS WIZARD	10

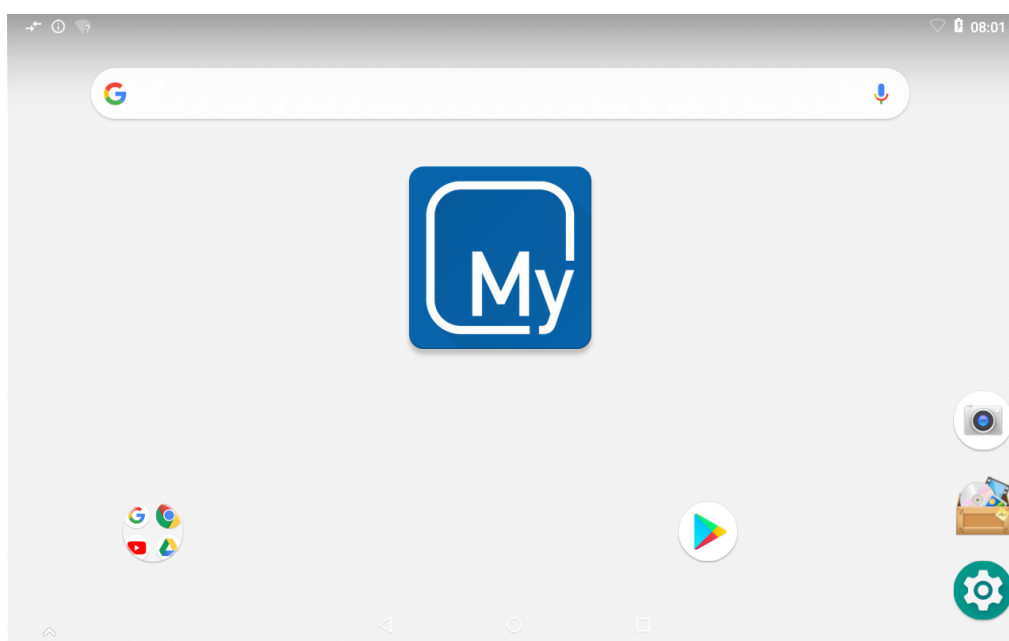
# 1 - INTRODUCTION

---

Welcome to your new MyLights smart lighting system.

The information provided in this user manual will help you to get the most from your new lights.

Upon first power up, the system will take a few minutes to initialise. If you walk away from your screen it will go to sleep, to wake the screen simply double tap on a corner of the screen.

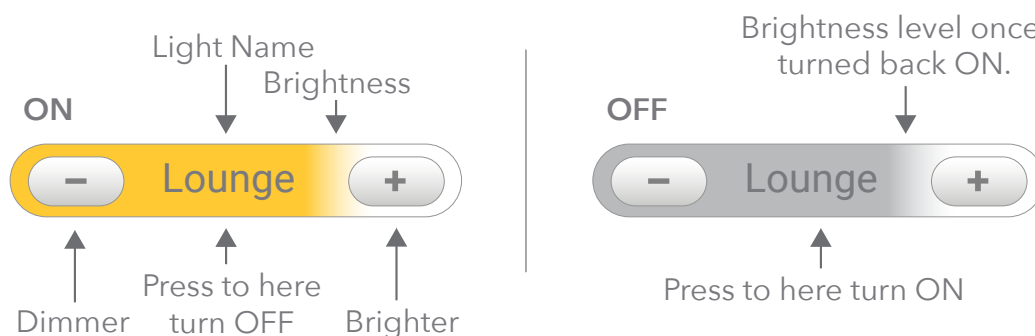


This is your home screen, press the large MyPlace button to start the MyPlace app. Once the MyPlace app has loaded press the yellow MyLights Tab to start controlling your lights.

## 2 - CONTROLS

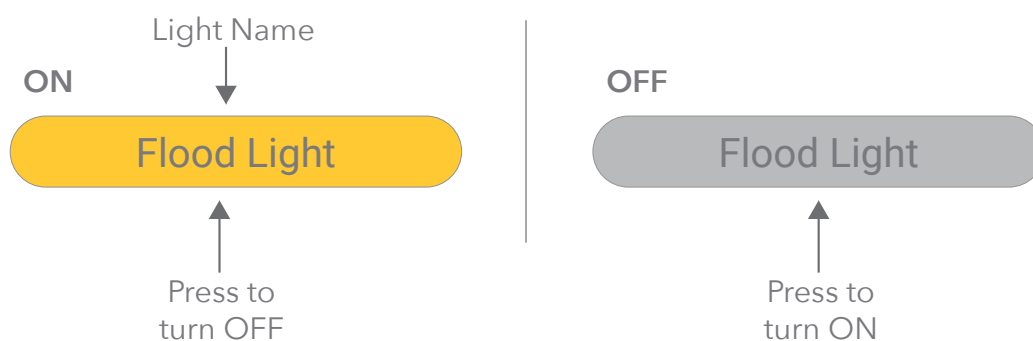
The following explains the types of buttons or switches that are found in the MyLights system.

### Light button (dimmable)

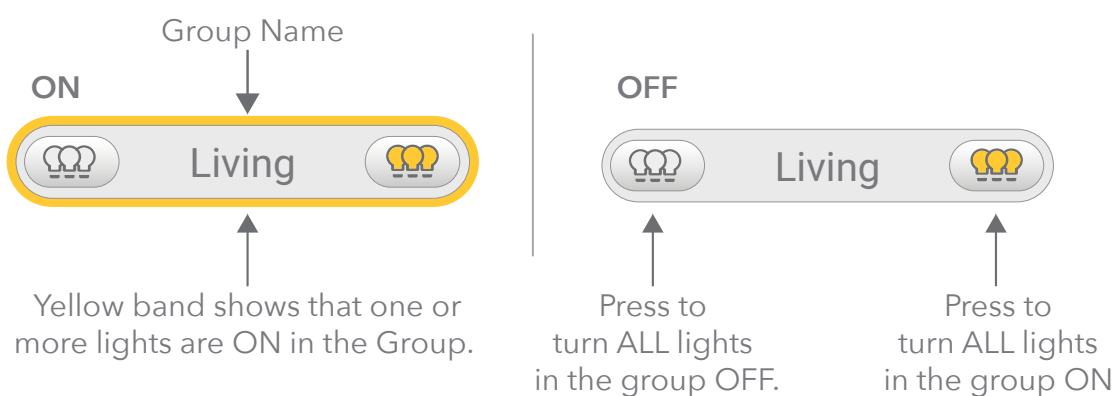


- Brightness can be adjusted even when the lights are off
- Flick the light wall switch 4 times for 100% brightness

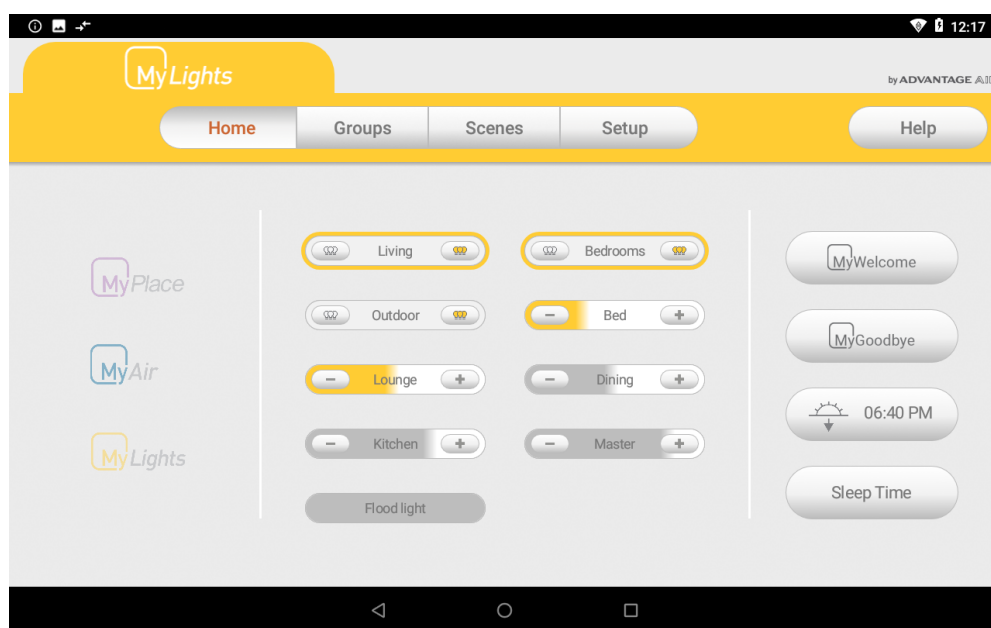
### ON/OFF button (not dimmable)



### Group button



## 3 - HOME PAGE



### Favourite Groups and Lights

The middle section of the Home screen displays the most used switches (for each device) and also any groups that have been starred in the Group screen. Starred groups will be shown first, followed by the most used switches.

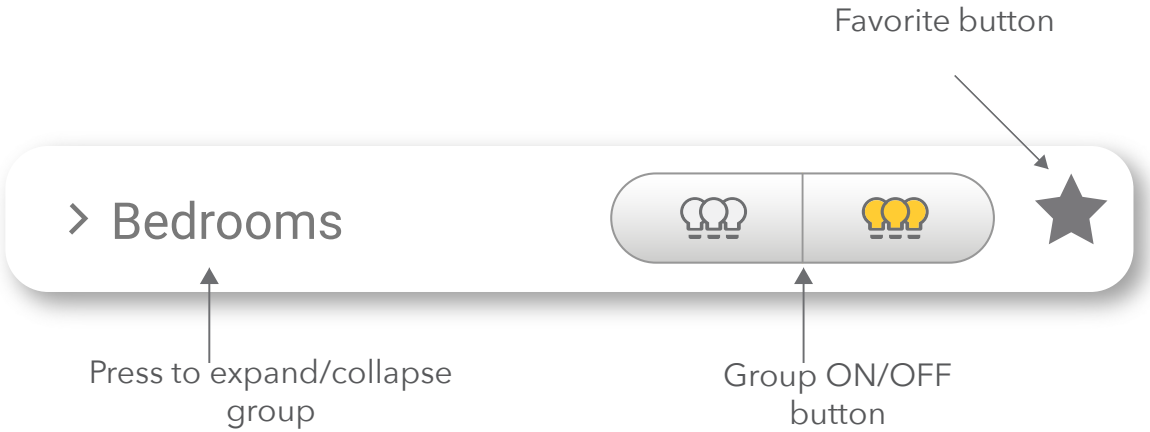
### Favourite Scenes

These are your four favourite scenes that have been starred from the Scenes screen. The four scenes can be changed at any time by selecting and deselecting the stars on the Scenes screen. Pressing a favourite scene button will run that scene.

**NOTE:** If you also have MyPlace or MyAir, this homepage will not exist. Instead, you should refer to MyPlace homepage that will include MyPlace, MyAir & MyLights items. This will be your quick access for all of your items in your smart home system.

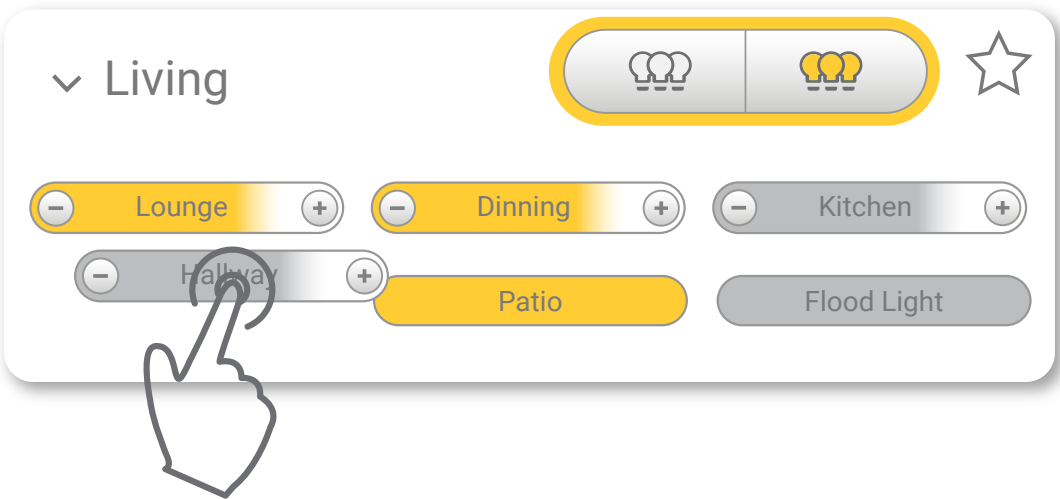
# 4 - GROUP PAGE

The Groups screen enables you to group lights into useful groups, such as creating a group for all of the lights in your bedrooms. This allows you to control all of the grouped lights from a single button.



Groups can be created, renamed or deleted through the Manage Groups button found on the Setup screen. Up to 10 groups can be created.

Pressing and holding on a switch icon in the Group screen will allow you to drag the switch into a new position or group.




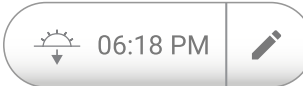


## 5 - SCENES PAGE

Scenes allow you to set your lights the way you want them from a single button. There are two types of Scenes Master and Custom.

### Master Scenes

There are 4 master scenes that perform preconfigured functions. The master scenes are:

- MyWelcome  
Turns ON all the lights in the system 
- MyGoodbye  
Turns OFF all the lights 
- MyEco  
Saves energy by dimming all the lights to 80% 
- MySunset  
Turns on selected lights at sunset. 

**NOTE:** Scenes that are editable have an edit button shown by the pencil icon.

### Custom Scenes

Custom scenes are customisable.

The user can set the scene to do the following:

- Turn lights ON
- Turn lights OFF
- Set the dim level of lights that are ON or OFF
- Ignore the certain lights when running the scene
- Schedule the scene to run at a time on any day of the week

### Creating a Custom Scene

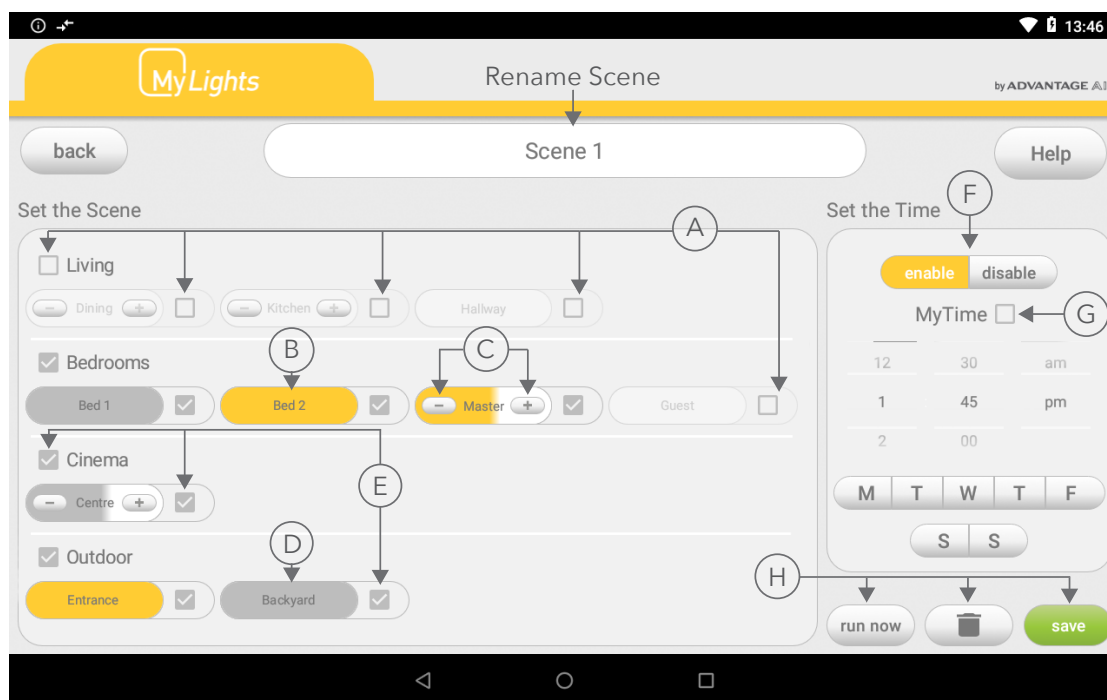
To create a new Custom Scene press the + button. This will bring up the Scene Editor screen.



See the next page for details on the Scene editor screen.

## 6 - SCENES EDITOR PAGE

The Scene Editor screen as shown below is where you can configure any new or existing scenes.



### Set the Scene Window

The set the scene window allows you to control what the scene will do to your lights when it runs.

- Ⓐ- Unticked Groups and Buttons will be ignored when the scene runs.
- Ⓑ- Lights will turn ON when the scene runs.
- Ⓒ- Set the brightness level of the Lights when the scene runs.
- Ⓓ- Lights will turn OFF when the scene runs.
- Ⓔ- Ticked Groups and Buttons are included in the scene.

### Ⓕ- Set the Time Window

This window allows you to set a time and choose which days for your scene to run. The schedule can be enabled and disabled.

### Ⓖ- MyTime

MyTime allows you to slowly turn on the dimmable lights at a set time. Press the checkbox to enable or disable MyTime.

### Ⓗ- Saving, Running and Deleting a Scene

All changes to a Scene must be saved by pressing the save button. You can run a scene from the editor screen pressing the "Run Now" button. If the scene is no longer needed then it can be deleted by pressing the trash button.

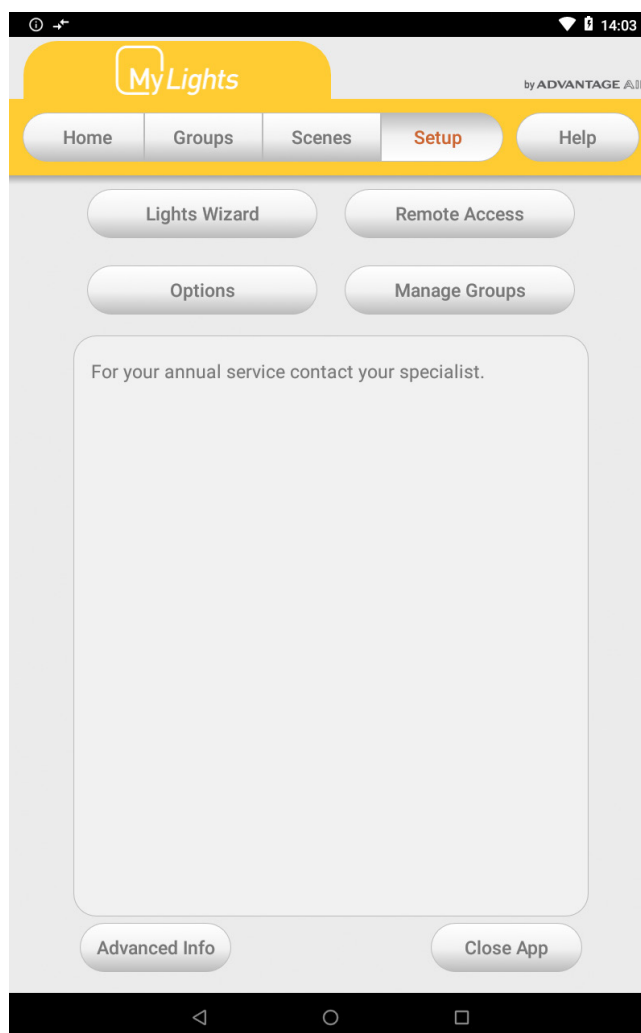


## 7 - SETUP PAGE

---

The Setup Screen allows you to configure your MyLights system. From this screen you can perform the following actions:

- Name and Group lights using the Lights Wizard;
- Enable and setup Google Home to talk to Smart Khaya using Options button;
- Enable / Disable Remote Access;
- Manage Groups (create, rename & delete);
- Access Advanced Information about your system; and
- View any status messages and status codes in the bottom window.

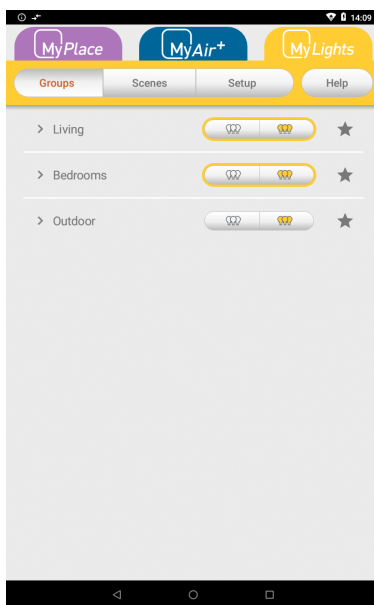


## 8 - LIGHTS WIZARD

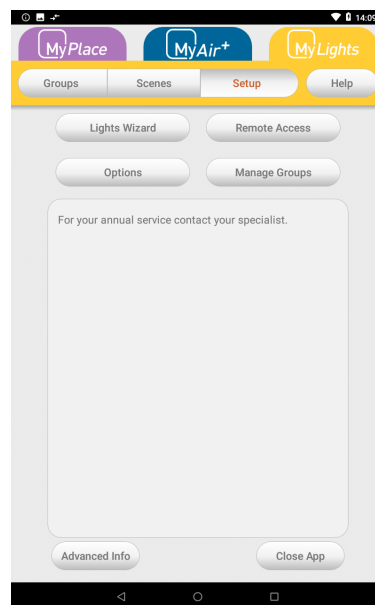
The lights wizard allows you to rename lights, setup new groups and join lights to groups.



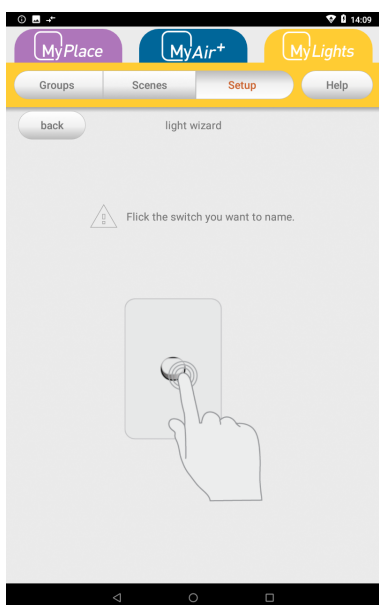
1. Press the **My** app located on the home screen of your MyLights tablet.



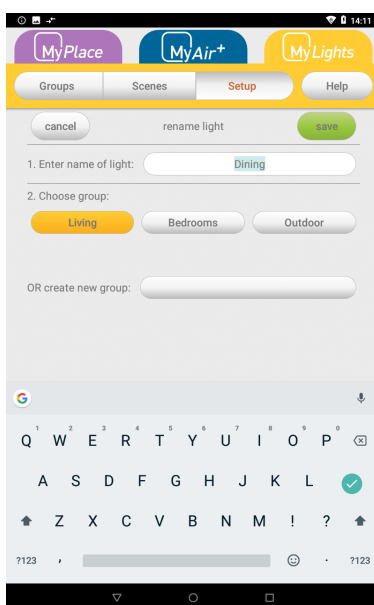
2. Press the yellow MyLights tab and then press the Setup button in the menu.



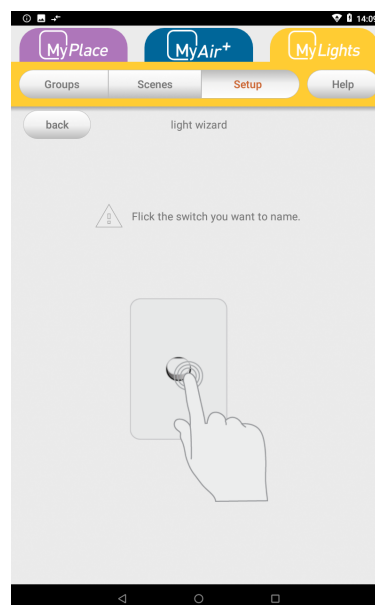
3. Press the LIGHTS WIZARD button.



4. Flick the wall light switch that you would like to (re)name.



5. Name the light switch & select the group you would like it to join, then press save.



6. Proceed with naming & grouping all other lights.

# ADVANTAGE AIR®

## The advantage of Australian-made

MyLights is designed by Advantage Air, an Australian company based in Perth, Western Australia. Since 1990, we've been dedicated to making peoples' lives more comfortable.

We started with designing and manufacturing innovative ducted air-conditioning systems. The connected smart home, like smart lighting, is the natural evolution of helping you create an environment where everything is exactly the way you like it.

We take pride in creating and exporting a local product that is world class. To achieve this, we embrace technology and invest heavily in research and development. Our ingenious engineers have developed numerous industry firsts and earned us a slew of patents, registered designs and design awards in the process.

We are committed to quality and where possible, make our components in Australia. Like MyAir, your MyLights system is built to last. The only thing that shines brighter than our lights? Our service.

## 5-Year Warranty

Advantage Air components are well known in the industry for their quality and durability. To prove our confidence, we provide a 5-year warranty on all electronic controls.

## Corporate responsibility

Advantage Air is all about bringing comfort to people. We are proud to be a sponsor of Channel 9's Matt & Kim to the rescue. The show delivers life-changing renovations to families in desperate need.

## ADVANTAGE AIR®

### Australia

#### Perth

Advantage Air AUST Pty Ltd  
115 Vulcan Road, Canning Vale  
Western Australia 6155

**T:** 1300 850 191

**E:** techsupport@advantageair.com.au

#### Brisbane

Advantage Air (QLD) Pty Ltd  
359 Fison Avenue East, Eagle  
Farm, Queensland 4009

#### Sydney

Advantage Air (NSW) Pty Ltd  
7/10 Anella Avenue, Castle Hill,  
New South Wales 2154

For further assistance, call our MyTeam Support on 1300 850 191, Mon-Fri from 6am to 5pm WST.

Advantage Air Aust Pty Ltd reserves the right to change specifications, modify designs and discontinue items. Whilst we try to keep every detail in this document current and accurate, if there are differences or changes then Advantage Air shall not be liable for these.